



新日興股份有限公司

SHIN ZU SHING CO.,LTD.

2024年第三季營運成果說明

2024 Q3 Earnings Results



2024. 11. 12



免責聲明 Disclaimer



- ◆ 本簡報及同時發佈之相關訊息所提及之前瞻性資訊，乃本公司對未來可能發生的業務活動、發展之預測性陳述。未來實際發生的營運結果、財務狀況以及業務成果，可能與本簡報預測性資訊有所差異。其原因可能來自於各種本公司無法掌控之風險等因素。
- ◆ 本簡報中對未來的展望，反映本公司截至目前為止對於未來的看法。對於這些看法，未來若有任何變更或調整時，本公司並不負責隨時再度提醒或更新。



Agenda

- 01 資產負債表 Balance sheet
- 02 B/S重要比率 B/S ratio
- 03 損益表 Income statement
- 04 I/S重要比率 I/S ratio
- 05 營收狀況 Consolidated Revenue
- 06 營收狀況-產品別 Revenue Mix
- 07 獲利能力 Profitability

資產負債表 Balance sheet



新台幣百萬元 Million NT Dollars	2022	2023	3Q24	年增率YoY (%)			3Q23
				2022	2023	3Q24 (與去年同期比較)	
流動資產 Current assets	12,636	12,600	14,877	-12.52%	-0.28%	16.14%	12,809
不動產、廠房及設備 Property, plant and equipment	5,759	5,364	5,529	-5.50%	-6.86%	1.60%	5,442
其他非流動資產 Other non-current assets	3,045	3,588	3,637	272.25%	17.83%	4.99%	3,464
資產總計 Total assets	21,440	21,552	24,043	0.39%	0.52%	10.72%	21,715
流動負債 Current liabilities	4,967	5,531	5,143	9.72%	11.35%	-10.57%	5,751
非流動負債 Non-current liabilities	593	468	1,238	-54.45%	-21.08%	138.08%	520
負債總計 Total Liabilities	5,560	5,999	6,381	-4.61%	7.90%	1.75%	6,271
淨值比率(%) Equity ratio	74.07%	72.16%	73.46%	1.87%	-2.57%	3.29%	71.12%

B/S重要比率 B/S ratio



	2019	2020	2021	2022	2023	3Q24
應收款項週轉率(次) Receivables turnover ratio	2.62	2.74	2.30	2.63	2.37	2.75
存貨週轉率(次) Inventory turnover ratio	5.60	6.39	5.23	5.17	4.81	5.39
應付款項週轉率(次) Payables turnover ratio	4.09	4.07	3.48	4.49	3.86	3.69
資產報酬率(% ROA	7.07	8.02	5.37	7.80	3.84	6.31
權益報酬率(% ROE	9.91	11.47	7.49	10.57	5.14	8.51
純益率(% Net profit ratio	10.98	10.98	9.63	14.03	8.02	10.56
現金流量比率(% Cash flow ratio	31.12	35.43	49.32	30.85	38.15	-5.60

損益表 Income statement



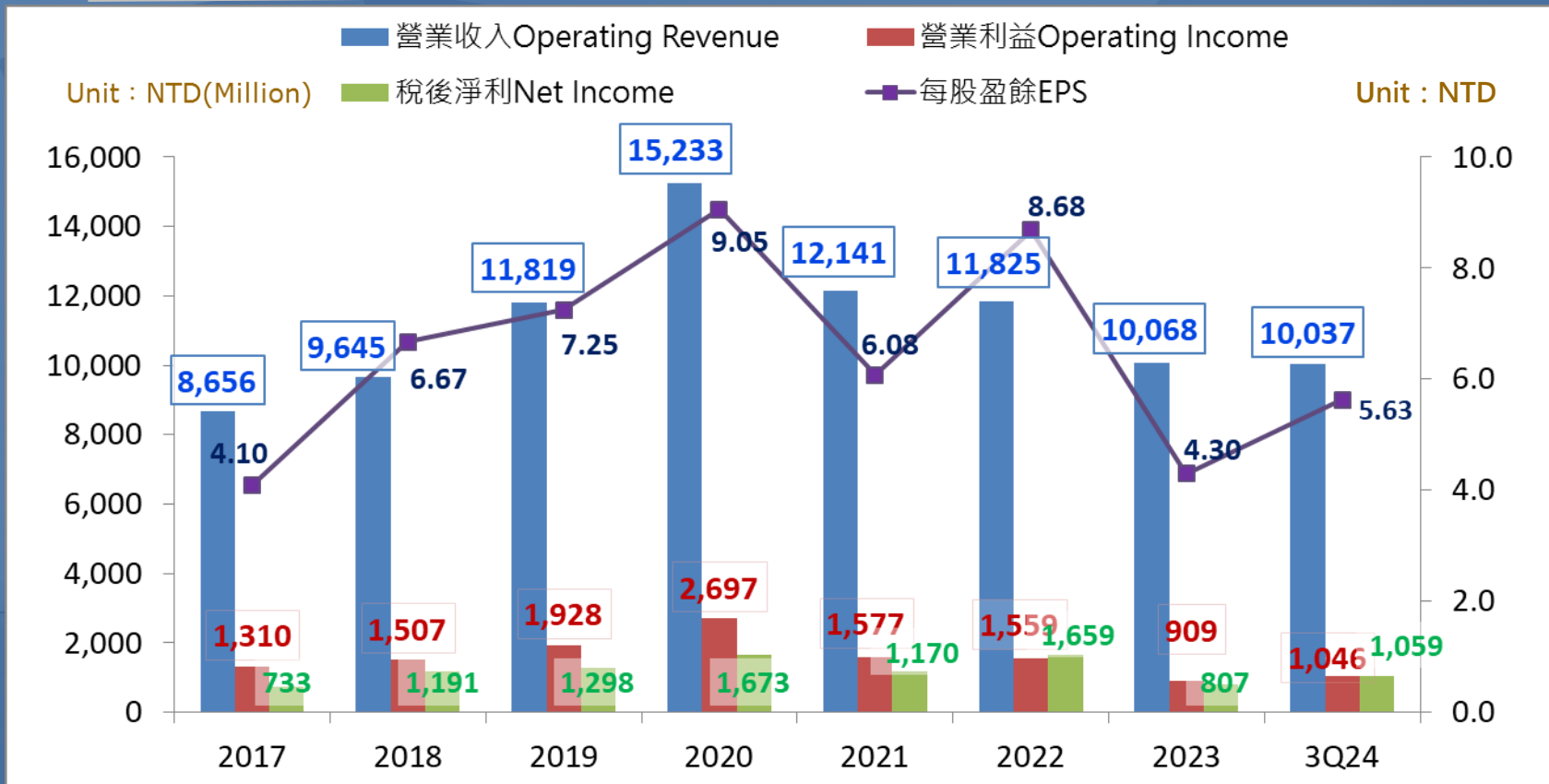
新台幣百萬元 Million NT Dollars	2022	2023	3Q24	年增率YoY (%)			3Q23
				2022	2023	3Q24 (與去年同期比較)	
營業收入 Operating revenue	11,825	10,068	10,037	-2.60%	-14.86%	41.87%	7,075
營業毛利 Operating margin	2,502	1,805	1,920	2.58%	-27.86%	55.34%	1,236
營業費用 Operating expenses	942	896	874	9.28%	-4.88%	35.29%	646
營業利益 Operating Income	1,559	909	1,046	-1.14%	-41.69%	77.29%	590
稅前淨利 Profit before income tax	2,268	1,163	1,379	38.89%	-48.72%	55.64%	886
所得稅 Income tax	609	356	320	31.53%	-41.54%	22.14%	262
稅後淨利 Net Income	1,659	807	1,059	41.79%	-51.36%	69.98%	623
每股盈餘 EPS	8.68	4.30	5.63	42.76%	-50.46%	69.58%	3.32

I/S重要比率 I/S ratio



	2019	2020	2021	2022	2023	3Q24
毛利率(%) Margin ratio	23.60	23.99	20.09	21.16%	17.93%	19.13%
營業費用率(%) Operating expenses ratio	7.28	6.29	7.10	7.97%	8.90%	8.71%
營業利益率(%) Operating Income ratio	16.31	17.70	12.99	13.18%	9.03%	10.42%
所得稅率(%) Income tax ratio	6.03	5.07	3.81	5.15%	3.54%	3.19%
淨利率(%) Profit ratio	10.98	10.98	9.63	14.03%	8.02%	10.55%

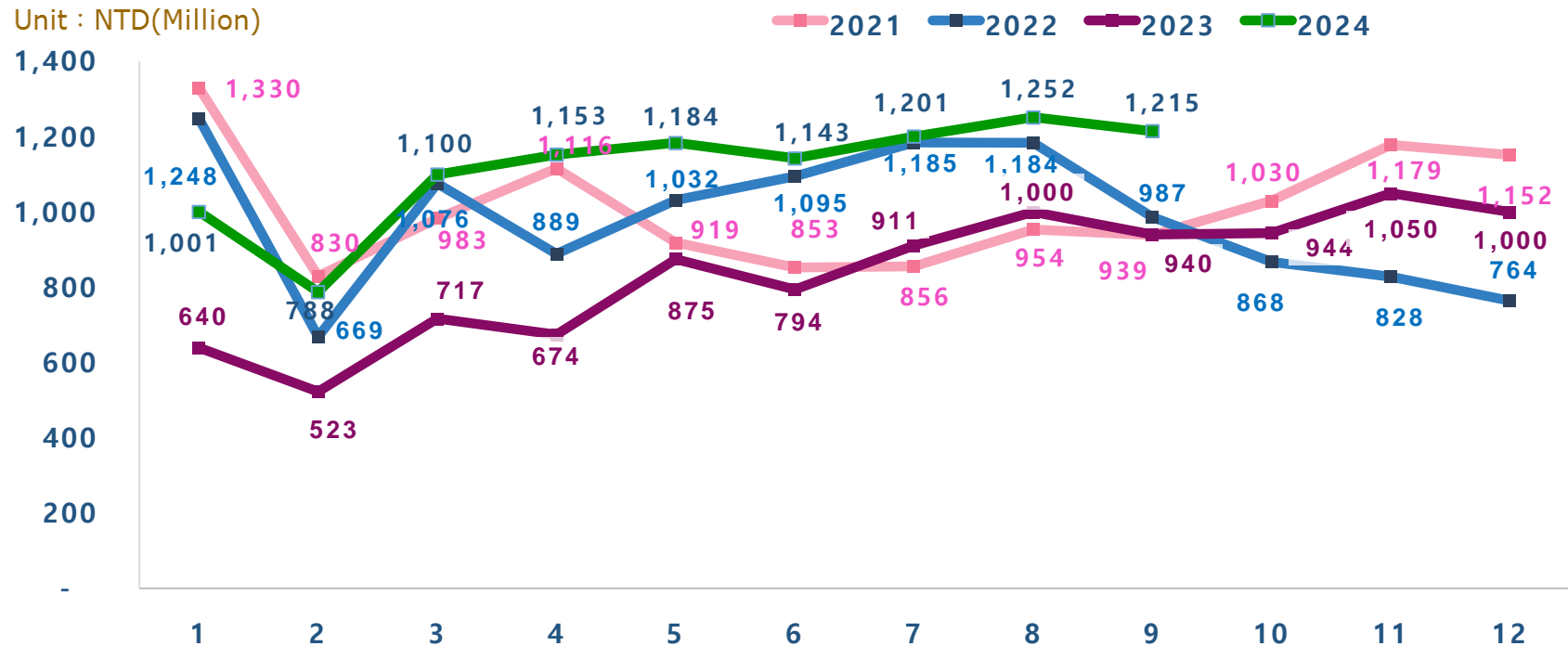
營收狀況 Consolidated Revenue



新日興集團合併營收曲線圖



SZS Group 2021-202409 Consolidated Revenue



2024年1-9月主要營業比重



Revenue Mix

樞紐組立製品
Hinges-NB
1,840,847



樞紐組立製品
Hinges-LCD
1,377,811



樞紐組立製品
Hinges-3C
1,071,917



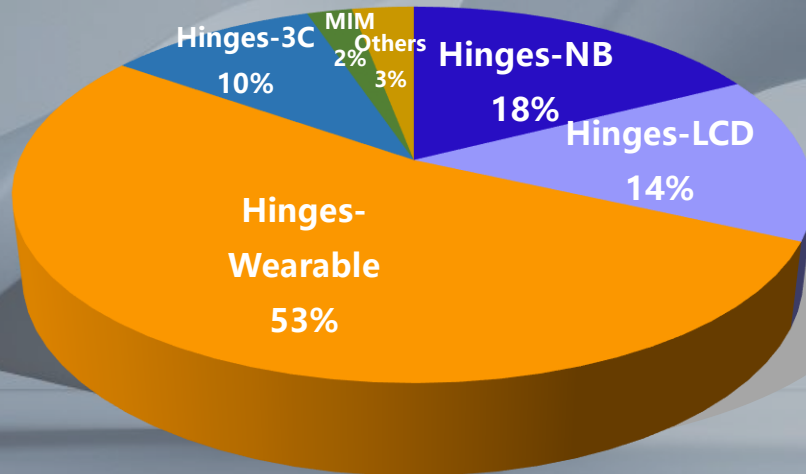
穿戴及配件製品
Hinges-Wearable
5,289,515



粉末冶金
MIM
168,296



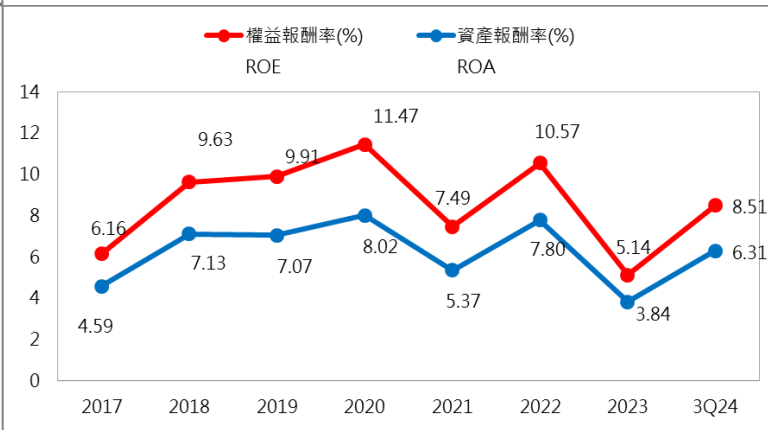
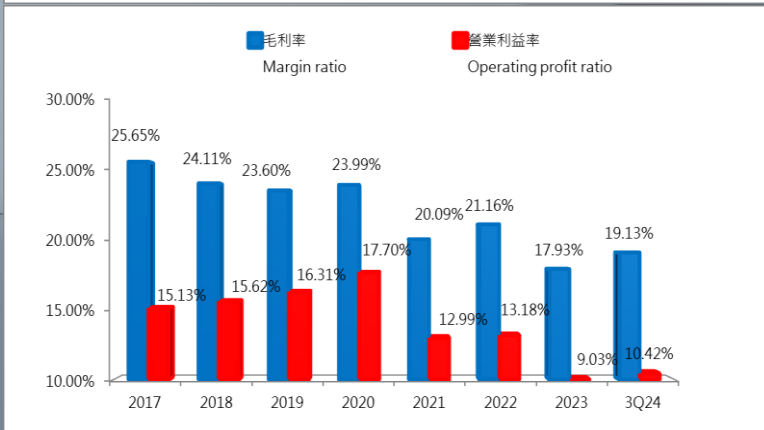
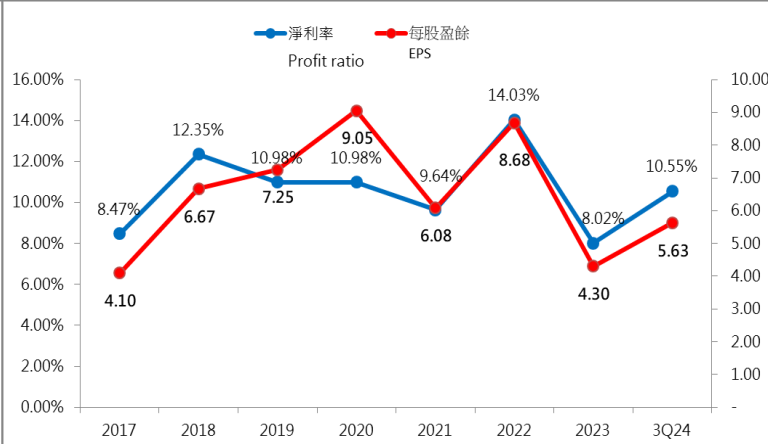
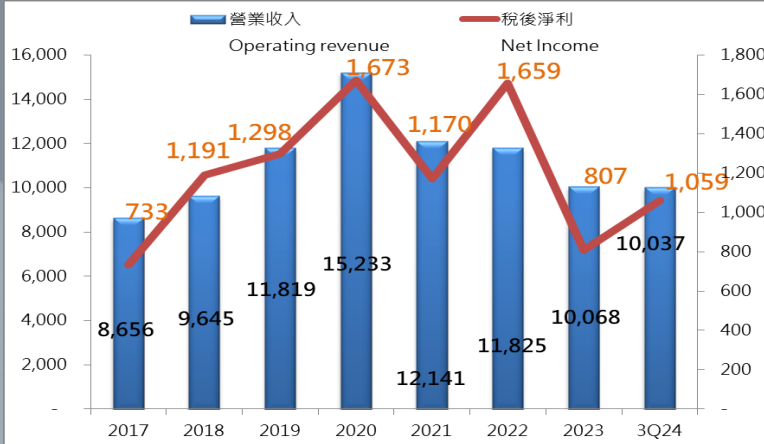
其他
Others
288,934



合併總營收 Total Consolidated Sales
10,037,320

(Thousand NT Dollars)

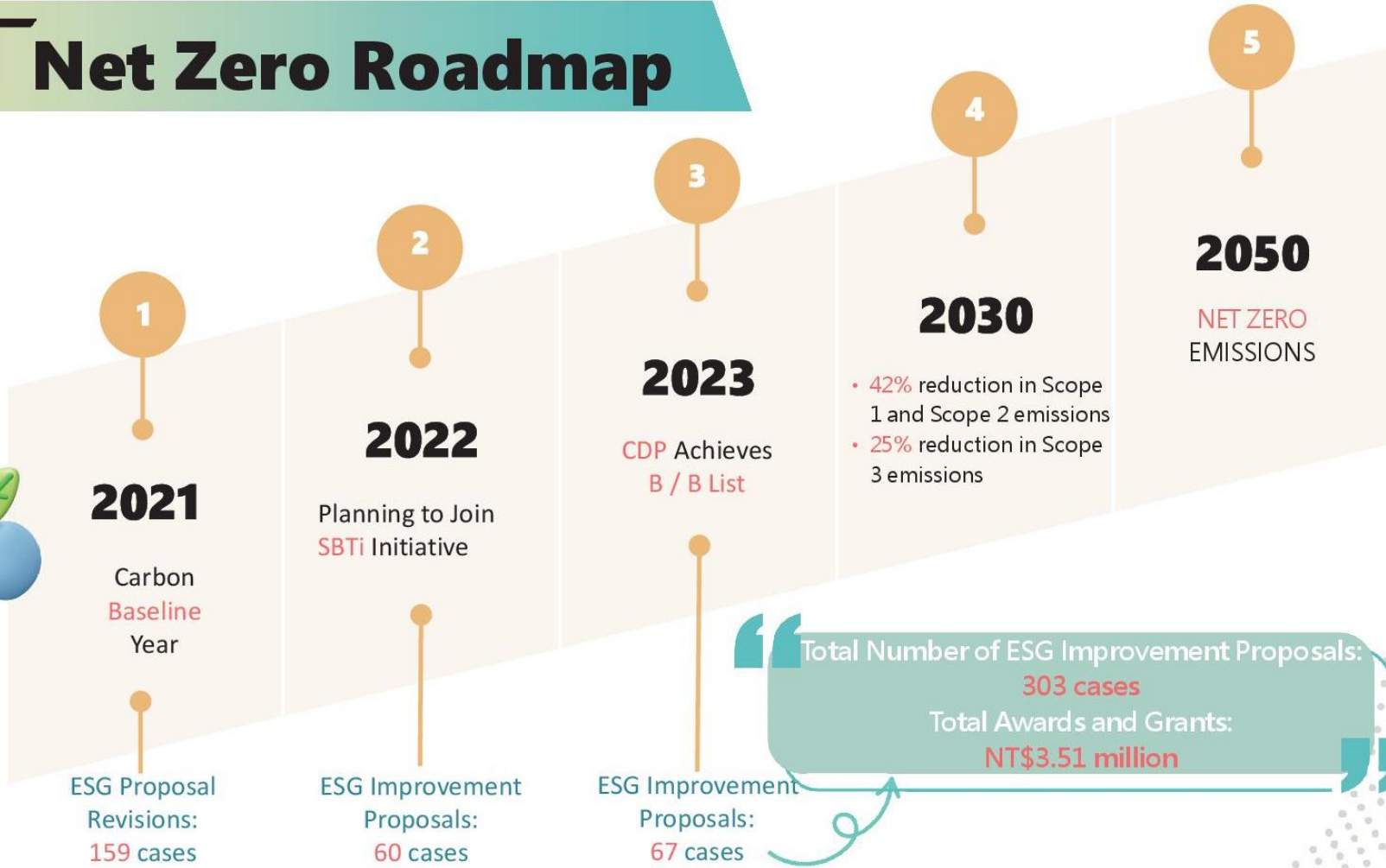
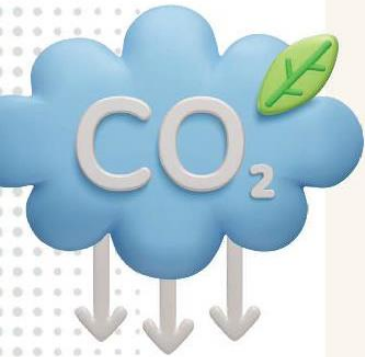
獲利能力 Profitability



The graphic features the letters 'ESG' in a large, bold, green font. The letter 'E' is a teal color, while 'S' and 'G' are a vibrant green. A wind turbine is positioned in front of the 'E', and a city skyline with illuminated buildings is visible behind the 'S'. To the right of the 'S', there are two interlocking green gears. The background is a dark blue gradient with white clouds, yellow stars, and teal arrows. Below the 'ESG' graphic, the word 'PERFORMANCE' is written in a large, bold, green font with a slight shadow effect.

ESG PERFORMANCE

SZS Net Zero Roadmap



Environmental Performance



Declared to Join SBTI Initiative

In 2024, we will submit carbon reduction targets, and the target verification process will begin.



CDP Recognition

2023 CDP Questionnaire Management Level



Carbon Reduction Achievements

2021-2023 Group-wide Carbon Reduction by 20%,
15,000 tons of CO₂e



Green R&D

Integrated Green Design and Manufacturing Concepts
Hinge Product Modeling



ISO 50001

Plan to implement the ISO 50001 .
Achieved Factory Power Flow Visibility





Climate Change

- Apply for SBTi initiatives.
- Collaborate with suppliers to reduce carbon emissions.



Circular Economy

- Implement equipment dismantling and re-manufacturing.
- Introduce oil recycling and reuse in lathes and milling machines.
- Industry Leader in Equipment Disassembly and Re-manufacturing



Water Resource Management

- Improved Process Water Recycling Rate by 50%.
- Enhanced Wastewater Treatment Efficiency by 40%.



Automated Production

- Fully Automated Production Line, Reducing Labor by 30%.
- Modularize and develop new products.



Green Buildings

- Design new plants with green building principles.
- Plan rooftop solar installations for existing plants.



Accumulated investment cost:

NT\$937,177,132



SZS Social Performance

Youth Empowerment Program

- Invested around NT\$30.1 million in industry-academia collaboration
- benefiting **1,028** students.

E-Learning Management System

- Developed general education and sustainability seed courses
- Total of **4,109** Classes Offered
- Investment of 3.51 Million.

Occupational Health and Safety Management

- Implemented ISO 45001 and established an Occupational Safety Committee. Conducts regular training to ensure effective implementation.
- Managed health screenings for over **1,367** high-risk employees.
- Prevented over 2,496 ergonomic hazards and identified risks.



Respect for Human Rights

- All SZS domestic and international sites have achieved RBA Silver Certification.
- Ensures fair treatment of foreign migrant workers, implementing a zero-fee policy.

Established the SZS volunteer team

- Providing 148 hours of service
- Benefiting **16,160** people

Joined the CommonWealth Magazine "River Basin Cohesion Plan"

- Using poetry inspired by the Tamsui River to raise public awareness of watershed protection.



SZS Social Performance



Received "**Healthy Workplace Certification/Health Promotion Badge**" from the Health Promotion Administration.

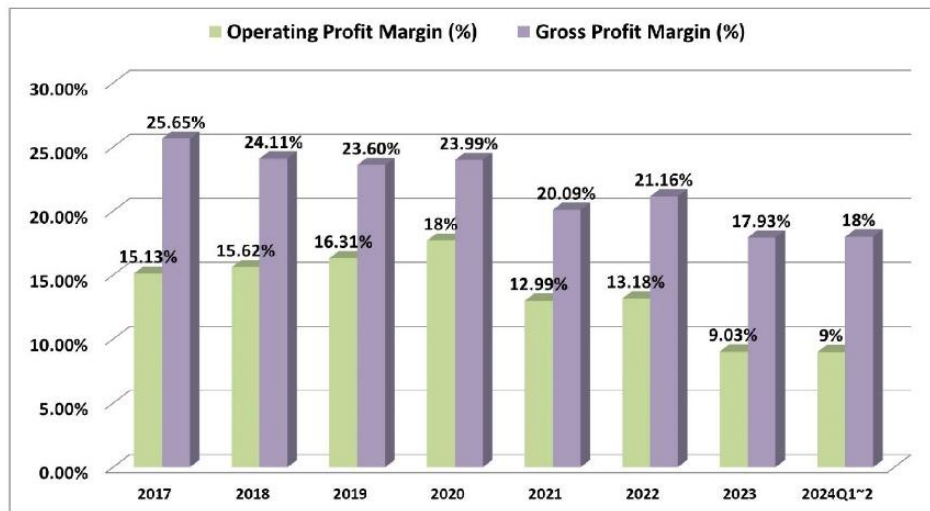
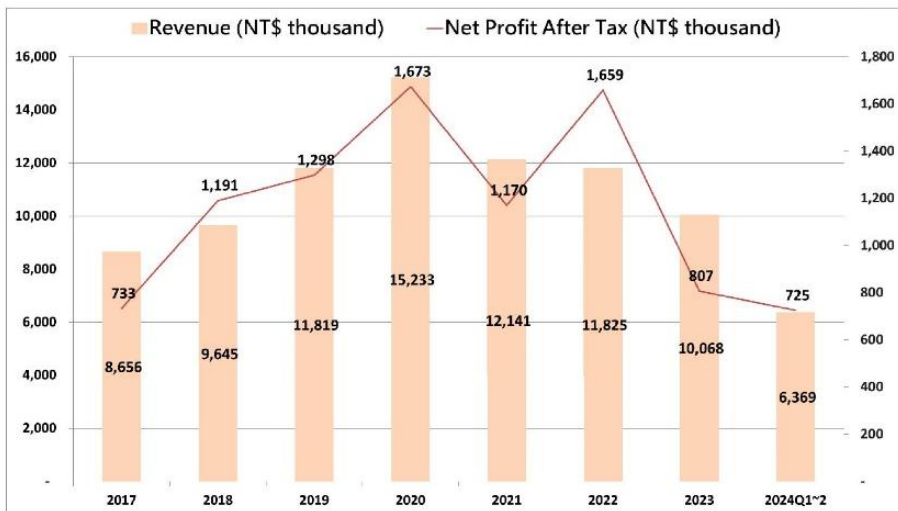


Ranked in the **top 10%** for "Occupational Health and Safety Indicators Proactive Evaluation" in the 2023 Annual Corporate Sustainability Report.



Reduced average turnover rate by **30%**.

SZS Governance Performance



Market Value Ranking:
223rd out of 587 listed companies.



Governance Performance



Governance Evaluation:

In 2023, SZS Company ranks in the

21% to 35%

among publicly listed companies.

Functional Committees:

Established and appointed a corporate governance officer.

Information Security:

Joined **TWCERT /CC** (Taiwan Computer Emergency Response Team Coordination Center) for cybersecurity initiatives.

Establish "Principles of Ethical Corporate Management," "Code of Ethical Conduct," and "Integrity and Ethical Business Management Regulations," along with a comprehensive whistleblowing mechanism.

Documentation:

Produced English versions of the annual report, sustainability report, significant information disclosures, and annual financial reports.

Board Independence:

≥ 80%

of directors are not employees or managers.

Gender Diversity:

Female directors make up

≥ 10%

of the board.

ISO27001

Implemented ISO 27001 standards and obtained certification.



2024 Sustainability Strategy Focus: Climate and Circular Economy

Focus Areas	Strategic Directions	2024 Goals		SDGs
Climate Change	Energy Efficiency		Increase energy efficiency of public and utility equipment by 10%.	
	Carbon Reduction Commitment	10%	Join the SBTi initiative and assist 10% of suppliers in conducting carbon inventories.	  
	Water Resource Management		Achieve zero errors in process wastewater discharge. 0%	
Circular Economy	Sustainable Design		Develop and design new products with sustainability as the primary goal.	
	Recycling and Reuse	10%	Increase waste recycling and reuse rate by 10%.	  
	Modular Production		Utilize new modular component designs to achieve a 10% reduction in carbon emissions.	
Sustainable Supply Chain	Supplier Engagement and Identification		Engage and identify 10% of key suppliers.	
	Supplier Support Programs	10%	Support 20% of suppliers in implementing ISO 14001/45001.	 
	Use of Low-Carbon Materials		Aim for 10% of general components to use low-carbon materials.	
Social Impact	Friendly Environment		Create a diverse and inclusive DEI workplace.	 
	Employee Engagement	80%	Achieve 80% employee engagement.	 
	Community Care		Attain 80% community care satisfaction.	



Thank You